

**The Cube,  
Mounts Bay School**  
United Kingdom



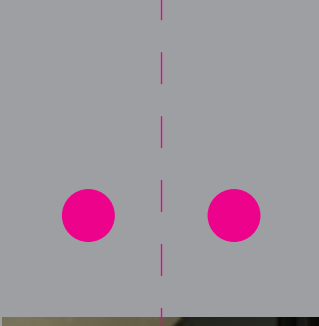
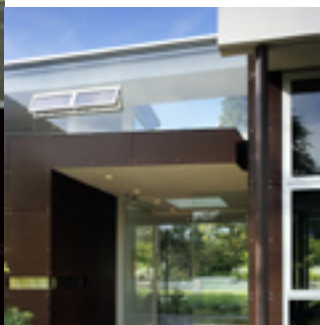
**Gourmelen Hospital**  
France



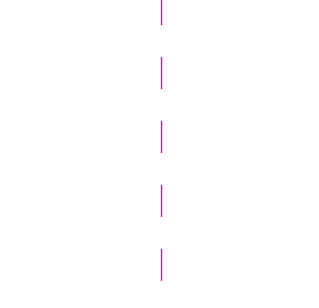
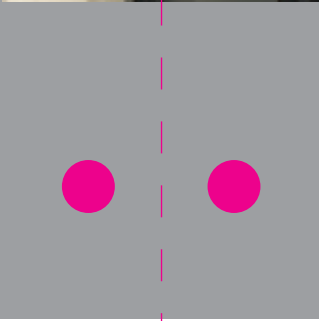
**Museum Georges Brassens**  
France



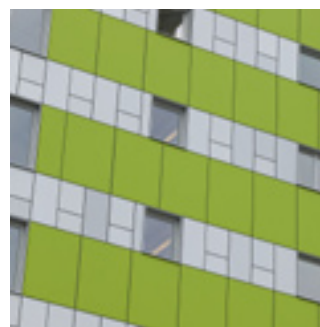
**Kelly Residence**  
United States



**Torenpad**  
The Netherlands



**Old Library**  
United Kingdom



**Shopping Center Thiais Village**  
**Location** : France  
**Function** : Shopping center  
**Architect** : Groupe 6 Architectes  
**Colour** : NW08 Italian Walnut, NW04 Pacific Board, M 51.0.1 Aluminium Grey  
**Structure** : Satin  
**Fixing System** : TS700 Visible fixing with rivets on an aluminium subframe

**ICT building Trespa International**  
**Location** : The Netherlands  
**Function** : Office Building  
**Designer** : Zilver innovation Zilver design  
**Colour** : All Trespa Meteor colours  
**Structure** : Satin  
**Fixing System** : TS450 Invisible fixing with adhesive on a timber subframe & TS200 Invisible fixing with screws or inserts

**The Cube Mounts Bay School**  
**Location** : United Kingdom  
**Function** : School  
**Architect** : Phineas Manasseh  
**Colour** : A 22.4.4 Brilliant Blue, A 21.5.4 Cobalt Blue  
**Structure** : Satin  
**Fixing System** : TS150 Visible fixing with screws on a timber subframe

**Gourmelen Hospital**  
**Location** : France  
**Function** : Hospital  
**Architect** : Cabinet Rocheteau & Saillard  
**Colour** : NW02 Elegant Oak, NW08 Italian Walnut, NW04 Pacific Board  
**Structure** : Satin  
**Fixing System** : TS150 Visible fixing with screws on a timber subframe

**Museum Georges Brassens**  
**Location** : France  
**Function** : Museum  
**Architect** : Cabinet Salvador  
**Colour** : NA08 Sierra Red  
**Structure** : Satin  
**Fixing System** : TS150 Visible fixing with screws on a timber subframe

**Kelly Residence**  
**Location** : United States  
**Function** : Private Housing  
**Architect** : Abramson Teiger Architects  
**Colour** : NW09 Wenge  
**Structure** : Satin  
**Fixing System** : TS110 Exposed fixing with screws on an aluminum subframe

**Torenpad**  
**Location** : The Netherlands  
**Function** : Multi housing, Apartments  
**Architect** : Groosman Partners Architecten  
**Colour** : A 25.8.1 Anthracite Grey, A 90.0.0 Black, M 12.4.2 Garnet Red  
**Structure** : Rock and Gloss  
**Fixing System** : TS450 Invisible fixing with adhesive

**Old Library**  
**Location** : United Kingdom  
**Function** : Multi Housing, Apartments  
**Architect** : AHMM  
**Colour** : M 51.0.1 Aluminium Grey  
**Structure** : Satin  
**Fixing System** : TS450 Invisible fixing with adhesive

2007  
**EXTERIOR  
 PROJECTS**

**Trespa International B.V.**  
 Trespa International B.V. specialises in high quality panel material for façade cladding and interior use. Trespa has both the expertise and the means to develop products for specific segments of the market. Trespa is continually looking for ways to protect the environment even more effectively.

Trespa guarantees quality of both products and services. We offer our customers optimal technical support as well as straightforward documentation. Proof of this approach is the award of the ISO 9001 and ISO 14001 certificates.



Whatever your requirements, Trespa offers a full support service. Please contact us for further information.

**Conditions of Sale**

To all our offers, quotations, sales, deliveries and supplies and/or agreements, and to all related services and activities the

**Trespa UK Ltd**  
 Grosvenor House  
 Hollinswood Road  
 Central Park, Telford  
 Shropshire, TF2 9TW  
 Tel.: 44 (0) 1952 290707  
 Fax: 44 (0) 1952 290101  
 info@trespa.co.uk

**Trespa International B.V.**  
 P.O. Box 110, 6000 AC Weert  
 Wetering 20, 6002 SM Weert  
 The Netherlands  
 www.trespa.com

**EMEA Export**  
 Tel.: 31 (0) 495 458 359 / 285  
 Fax: 31 (0) 495 458 383  
 infoexport@trespa.com

Trespa International B.V. General Conditions of Sale apply, filed at the Venlo Chamber of Commerce on 11 April 2007, registered under number 24270677, and appearing on the website at [www.trespa.com](http://www.trespa.com). The text of these General Terms and Conditions will be sent to you upon request.

**Responsibility**

We believe all information in this publication to be correct at the time of printing. It is intended as information concerning our products and their application possibilities and is therefore, not intended as any form of guarantee with regard to any specific product characteristic.

**Colours**

The colours in this document are printed, and therefore, may vary slightly from the original Trespa panel colours with respect to gloss, colour shades and surface texture. Original samples are available on request.

**Registered trademarks**

® Trespa, Meteon, Athlon, TopLab, TopLab™, Virtuon, Volkern, Ioniq

**Trespa North America Ltd.**  
 12267 Crosthwaite Circle  
 Poway, CA 92064  
 Tel.: 1-800-4-TRESPA  
 Fax: 1-858-679-9568  
 info.northamerica@trespa.com

**Trespa New York Design Centre**  
 62 Greene Street (Ground Floor)  
 New York, NY 10012  
 Tel.: 1-212-334-6888  
 Fax: 1-866-298-3499  
 info.ny@trespa.com

**Asia/Pacific Sales Support**  
 Tel.: 86 (0) 21 6288 1299  
 Fax: 86 (0) 21 6288 1296  
 infoapac@trespa.com

and Inspirations are registered trademarks of Trespa International B.V.

**Copyrights**

© All rights reserved. No part of this publication may be reproduced, stored in a retrieval system, or made public, in any form or by any means, either graphic, electronic or mechanical, including photocopying, recording or otherwise, without the prior written permission of Trespa International B.V.

[www.trespa.com](http://www.trespa.com)

**Trespa China Co. Ltd.**  
 Room 2604-05, HuaiHai Plaza  
 No. 1045 HuaiHai Road (central)  
 ShangHai 200031, P.R. China  
 Tel.: 86 (0) 21 6288 1299  
 Fax: 86 (0) 21 6288 1296  
 infochina@trespa.com

**CSD Asia/Pacific**  
 Tel.: 86 (0) 21 5465 8388  
 Fax: 86 (0) 21 5465 6989

**Trespa Singapore Pte Ltd.**  
 3 Raffles Place  
 #07-01 Bharat Building  
 Singapore 048617  
 Tel.: +65 6329 9783  
 Fax: +65 6329 9699  
 infoapac@trespa.com



**TURN IDEAS INTO REALITY**

Trespa panels are used to create new and exciting façades all around the world. As a unique material, they provide architects and designers with the inspiration to create outstanding and innovative buildings.

In this folder, we highlight a small number of projects. Although few in number, they give an idea of the many possibilities. For a broader, more up-to-date overview please visit [www.trespa.com](http://www.trespa.com), where you will also find the latest information on all of our products and services.

**Talk to Trespa**

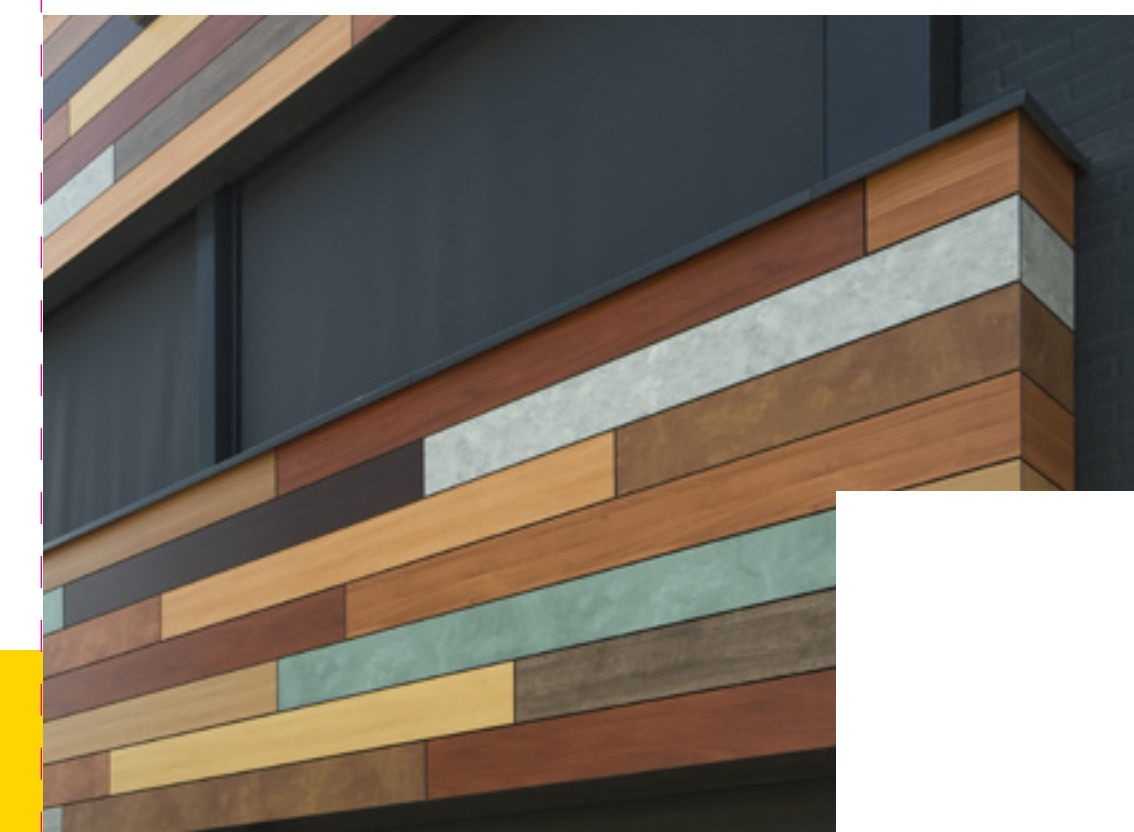
If we have inspired you to think Trespa and you would like to obtain some personal advice or more detailed information, please contact your nearest Trespa office.



**Shopping Center Thiais Village**  
 France



**ICT building Trespa International**  
 The Netherlands



Your Trespa distributor:

**TRESPA®**



code U2641  
 version 07-2009 copies 3,300

Please visit [www.trespa.com](http://www.trespa.com) for the most up to date version of this brochure