

**The Cube
Mounts Bay School**
United Kingdom



Gourmelen Hospital
France



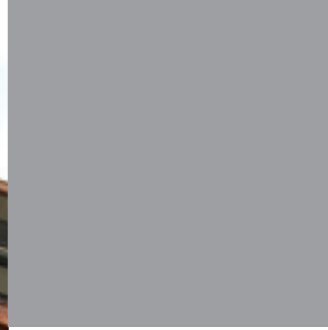
Museum Georges Brassens
France



Kelly Residence
United States



Torenpad
The Netherlands



Old Library
United Kingdom



Shopping Center Thiais Village
Location : France
Function : Shopping center
Architect : Groupe 6 Architectes
Color : NW08 Italian Walnut, NW04 Pacific Board, M 51.0.1 Aluminium Grey
Structure : Satin
Fixing System : TS700 Visible fixing with rivets on an aluminium subframe

ICT building Trespa International
Location : The Netherlands
Function : Office Building
Designer : Zilver innovation Zilver design
Color : All Trespa Meteor Colors
Structure : Satin
Fixing System : TS450 Invisible fixing with adhesive on a timber subframe & TS200 Invisible fixing with screws or inserts

The Cube Mounts Bay School
Location : United Kingdom
Function : School
Architect : Phineas Manasseh
Color : A 22.4.4 Brilliant Blue, A 21.5.4 Cobalt Blue
Structure : Satin
Fixing System : TS150 Visible fixing with screws on a timber subframe

Gourmelen Hospital
Location : France
Function : Hospital
Architect : Cabinet Rocheleau & Saillard
Color : NW02 Elegant Oak, NW08 Italian Walnut, NW04 Pacific Board
Structure : Satin
Fixing System : TS150 Visible fixing with screws on a timber subframe

Museum Georges Brassens
Location : France
Function : Museum
Architect : Cabinet Salvador
Color : NA08 Sierra Red
Structure : Satin
Fixing System : TS150 Visible fixing with screws on a timber subframe

Kelly Residence
Location : United States
Function : Private Housing
Architect : Abramson Teiger Architects
Color : NW09 Wenge
Structure : Satin
Fixing System : TS110 Visible fixing with screws on an aluminum subframe

Torenpad
Location : The Netherlands
Function : Multi housing, Apartments
Architect : Groosman Partners Architecten
Color : A 25.8.1 Anthracite Grey, A 90.0.0 Black, M 12.4.2 Garnet Red
Structure : Rock and Glass
Fixing System : TS450 Invisible fixing with adhesive

Old Library
Location : United Kingdom
Function : Multi Housing, Apartments
Architect : AHMM
Color : M 51.0.1 Aluminium Grey
Structure : Satin
Fixing System : TS450 Invisible fixing with adhesive

Not all fixing systems are available in all regions. Please contact your local Trespa office to find out more about available fixing systems in your region.

2007
**EXTERIOR
PROJECTS**

Trespa International B.V.
Trespa International B.V. specializes in high quality panel material for facade cladding and interior use. Trespa has both the expertise and the means to develop products for specific segments of the market. Trespa is continually looking for ways to protect the environment even more effectively.

Trespa guarantees quality of both products and services. We offer our customers optimal technical support as well as straightforward documentation. Proof of this approach is the award of the ISO 9001 and ISO 14001 certificates.



Whatever your requirements, Trespa offers a full support service. Please contact us for further information.

Conditions of Sale

To all our offers, quotations, sales, deliveries and supplies and/or agreements, and to all related services and activities the

Trespa North America Ltd.
12267 Crosthwaite Circle
Poway, CA 92064
Tel: 1-800-4-TRESPA
Fax: 1-858-679-9568
info.northamerica@trespa.com

Trespa New York Design Centre
62 Greene Street (Ground Floor)
New York, NY 10012
Tel: 1-212-334-6888
Fax: 1-866-298-3499
info.ny@trespa.com

Trespa Master Distributor Mexico
High Quality Panels S. de R.L. de C.V.
Av. Providencia # 2434-A
Col. Providencia
Guadalajara, Jalisco
México CP 44630
Tel: +52 (33) 12020189 / 12020250
Fax: +52 (33) 12020189 / 12020250,
Ext. 5
info@highqualitypanels.com

Trespa International B.V. General Conditions of Sale apply, filed at the Venlo Chamber of Commerce on 11 April 2007, registered under number 24270677, and appearing on the website at www.trespa.com. The text of these General Terms and Conditions will be sent to you upon request.

Responsibility

We believe all information in this publication to be correct at the time of printing. It is intended as information concerning our products and their application possibilities and is therefore, not intended as any form of guarantee with regard to any specific product characteristic.

Colors

The colors in this document are printed, and therefore, may vary slightly from the original Trespa panel colors with respect to gloss, color shades and surface texture. Original samples are available on request.

Registered trademarks

© Trespa, Meteon, Athlon, TopLab, TopLabsm, Virtuo, Volkern, Ioniq

Trespa International B.V.
P.O. Box 110, 6000 AC Weert
Wetering 20, 6002 SM Weert
The Netherlands
www.trespa.com

EMEA Export
Tel: 31 (0) 495 458 359 / 285
Fax: 31 (0) 495 458 383
infoexport@trespa.com

Trespa UK Ltd
Grosvenor House
Hollinswood Road
Central Park, Telford
Shropshire, TF2 9TW
Tel: 44 (0) 1952 290707
Fax: 44 (0) 1952 290101
info@trespa.co.uk

Trespa China Co. Ltd.
Room 2604-05, HuaiHai Plaza
No. 1045 HuaiHai Road (central)
ShangHai 200031, P.R. China
Tel: 86 (0) 21 6288 1299
Fax: 86 (0) 21 6288 1296
infochina@trespa.com

and Inspirations are registered trademarks of Trespa International B.V.

Copyrights

© All rights reserved. No part of this publication may be reproduced, stored in a retrieval system, or made public, in any form or by any means, either graphic, electronic or mechanical, including photocopying, recording or otherwise, without the prior written permission of Trespa International B.V.

www.trespa.com

Asia/Pacific Sales Support
Tel: 86 (0) 21 6288 1299
Fax: 86 (0) 21 6288 1296
infoapac@trespa.com

CSD Asia/Pacific
Tel: 86 (0) 21 5465 8388
Fax: 86 (0) 21 5465 6989

Trespa Singapore Pte Ltd.
3 Raffles Place
#07-01 Bharat Building
Singapore 048617
Tel: +65 6329 9783
Fax: +65 6329 9699
infoapac@trespa.com

Think
Trespa

TURN IDEAS INTO REALITY

Trespa panels are used to create new and exciting facades all around the world. As a unique material, they provide architects and designers with the inspiration to create outstanding and innovative buildings.

In this folder, we highlight a small number of projects. Although few in number, they give an idea of the many possibilities. For a broader, more up-to-date overview please visit www.trespa.com, where you will also find the latest information on all of our products and services.

Talk to Trespa

If we have inspired you to think Trespa and you would like to obtain some personal advice or more detailed information, please contact your nearest Trespa office.

Shopping Center Thiais Village
France

ICT building Trespa International
The Netherlands

TRESPA®

Your Trespa distributor:



code V2641
version 07-2009 copies 1.000

Please visit www.trespa.com for the most current version of this documentation