

Trespa Perspectives Rhythm

Panels as a decorative skin

DISCLAIMER

General

These terms apply to the use of this document and such use automatically means that the other party agrees to these terms. The information provided by Trespa International B.V. ("Trespa") in this document is solely indicative. Trespa is unable to warrant the accuracy and completeness of this information. Trespa may change the information included in this document at any time and without further notice. Trespa's customers and third parties must ascertain that they have the most recent document (for the most recent version, please consult: www.trespa.com). No rights can be derived from the information provided; the use of the information is at the other party's risk and responsibility.

Trespa does not warrant that the information in this document is suitable for the purpose for which it is consulted by the other party. This document does not contain any design, structural calculation, estimate or other warranty or representation that customers and third parties may rely on. This document does not guarantee any properties of Trespa products. Colours used in Trespa's communications (including but not limited to printed matter) and in samples of Trespa's products may differ from the colours of the Trespa products to be supplied. Samples are not intended for use in product tests

CONTACT US

Trespa International B.V.
P.O. Box 110, 6000 AC Weert
Wetering 20, 6002 SM Weert
The Netherlands
www.trespa.com

**Customer Service Desk
EMEA Export**
Tel: +31 (0) 495 458 359 / 573
Fax: +31 (0) 495 458 383
infoexport@trespa.com

Trespa UK Ltd.
Grosvenor House
Hollinswood Road
Central Park, Telford
Shropshire, TF2 9TW
United Kingdom
Tel: +44 (0) 1952 290707
Fax: +44 (0) 1952 290101
info@trespa.co.uk

and are not representative of characteristics of the Trespa products. Trespa's products and samples are produced within the specified colour tolerances and the colours (of production batches) may differ, even if the same colour is used. The viewing angle also influences the colour perception. Metallics panels feature a surface whose colour appears to change based on the direction from which it is viewed. The specified colour stability and colour specifications relate only to the decorative surface of the Trespa products, not to the core material and samples of the Trespa products. Trespa products are delivered ex-works with straight, sawn sides.

Customers and third parties must have a professional adviser inform them about (the suitability of) the Trespa products for all desired applications and about applicable laws and regulations. Trespa does not warrant the above.

The most recent version of the current delivery programme and the Material Properties Datasheet can be found at www.trespa.info. Only the information in the most recent and valid Material Properties Datasheet should be used to select and provide advice regarding Trespa products. Trespa reserves the right to change (the specifications for) its products without prior notice.

Trespa North America Ltd.
12267 Crosthwaite Circle
Poway, CA 92064
United States of America
Tel: 1-800-487-3772
Fax: 1-858-679-9568
info.northamerica@trespa.com

Trespa China Co. Ltd.
Room 2604-05, HuaiHai Plaza
No. 1045 HuaiHai Road (central)
ShangHai 200031
P.R. China
Tel: +86 (0) 21 6288 1299
Fax: +86 (0) 21 6288 1296
infochina@trespa.com

**Customer Service Desk
Asia/Pacific**
Tel: +86 (0) 21 5465 8388
Fax: +86 (0) 21 5465 6989
infoapac@trespa.com

Liability

Trespa is not liable (neither contractual nor non-contractual) for any damage arising from or related to the use of this document, except if and to the extent that such damage is the result of wilful misconduct or gross negligence on the part of Trespa and/or its management. The limitation of liability applies to all parties affiliated with Trespa, including but not limited to its officers, directors, employees, affiliated enterprises, suppliers, distributors, agents, and representatives.

General conditions

All oral and written statements, offers, quotations, sales, supplies, deliveries and/or agreements and all related activities of Trespa are governed by the Trespa General Terms and Conditions of Sale (*Algemene verkoopvoorwaarden Trespa International B.V.*) filed with the Chamber of Commerce and Industry for Noord- en Midden-Limburg in Venlo (NL) on 11 April 2007 under number 24270677, which can be found on and downloaded from the Trespa website, www.trespa.com.

All oral and written statements, offers, quotations, sales, supplies, deliveries and/or agreements and all related work of Trespa North America, Ltd. are governed by the Trespa General Terms and Conditions of Sale, which can be found on and downloaded from the

Trespa North America Ltd. website, www.trespa.com/na. A copy of these general conditions of sale will be provided free of charge on request.

All general terms and conditions other than the conditions mentioned above are dismissed and do not apply, regardless of whether such terms and conditions are referred to on requests for offers, offer confirmations, stationery and/or other documents of the other party, even if Trespa does not expressly object to such terms and conditions.

Intellectual property

All intellectual property rights and other rights regarding the content of this document (including logos, text and photographs) are owned by Trespa and/or its licensors. Any use of the content of this document, including distribution, reproduction, disclosure, storage in an automated data file or the dispatch of such a file without Trespa's prior written consent is explicitly prohibited. © Trespa, Meteon, Athlon, TopLab, TopLab^{PLUS}, TopLab^{ECO-BIBB}, Virtuon, Volkern, Trespa Essentials and Mystic Metallics are registered trademarks of Trespa.

Questions

Should you have any questions or comments, please do not hesitate to contact Trespa.

www.trespa.com

VISIT US

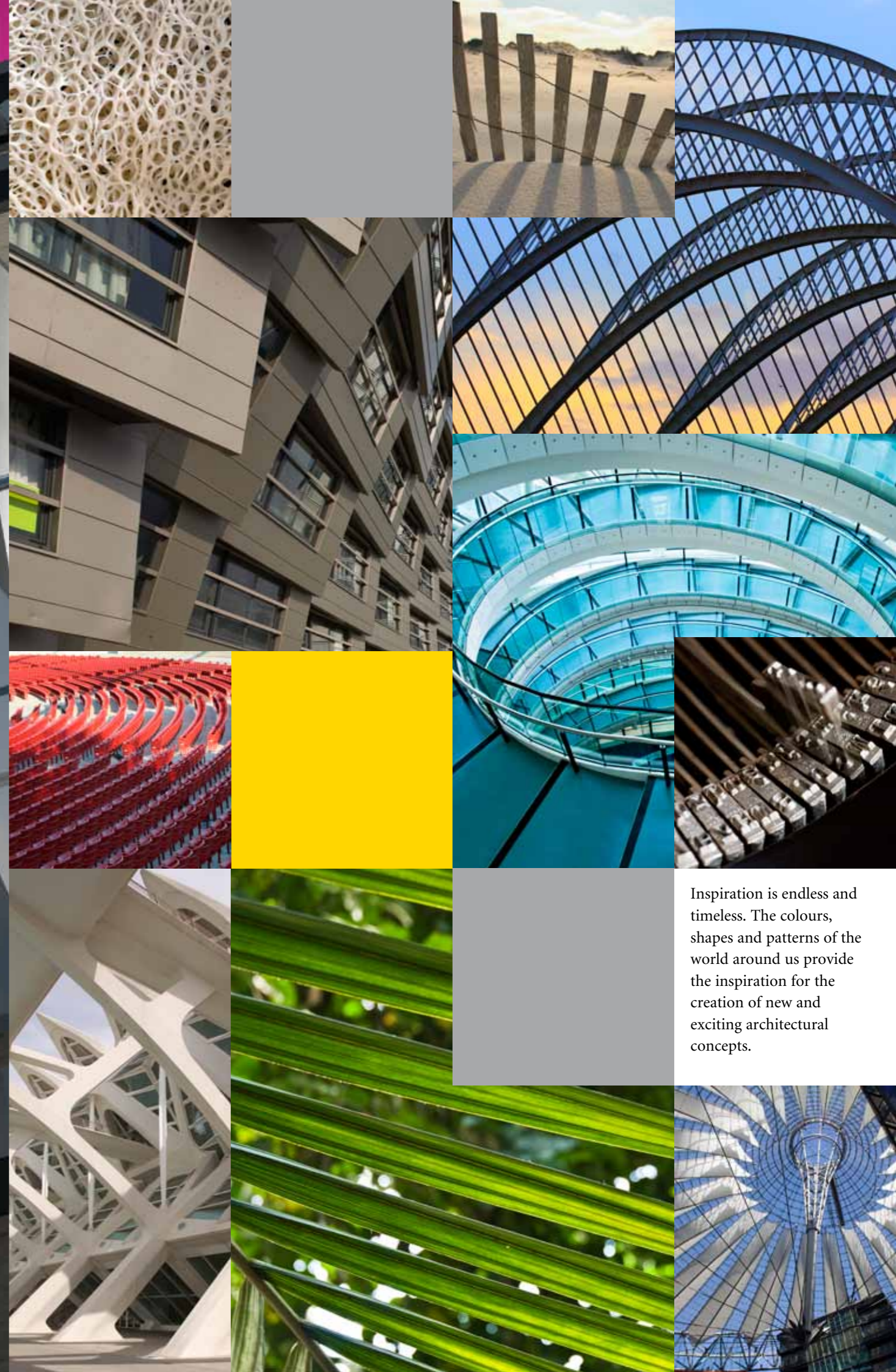
**Trespa Design Centre
New York**
62 Greene Street (Ground Floor)
New York, NY 10012
United States of America
Tel: 1-212-334-6888
Fax: 1-866-298-3499
info.ny@trespa.com
www.trespa-ny.com

**Trespa Design Centre
Barcelona**
Calle Ribera 5,
08003 Barcelona
Spain
info.barcelona@trespa.com

Always
another angle,
think Trespa

Please visit www.trespa.com
for the most up to date version
of this document.

TRESPA®

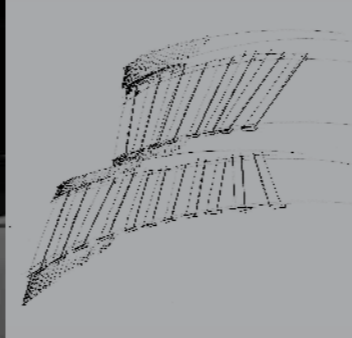


Inspiration is endless and timeless. The colours, shapes and patterns of the world around us provide the inspiration for the creation of new and exciting architectural concepts.



The perfect balance

There are two sides to everything. This concept enables you to turn things around, revealing what is behind the surface. Create regular patterns, or break them, there is always a visual surprise around the corner.



From both sides



There is no right direction. This concept shows different directions all at once. Nothing is ever as straightforward as it seems – and there are many ways to achieve the unexpected.



Beyond the surface

Make shapes from shapes with creative cutting. This concept enables you to highlight and give form to the empty space that is left behind.



Added space



The surface may be only skin-deep, it usually hides what lies beneath. Not so in this concept, where we show – or hint at – the layers beyond. Beauty is more than skin-deep.



Rhythm

Panels as a decorative skin

If you are looking to create unique and highly individual façades, think Trespa.

Trespa Meteor panels can be used to create a decorative skin that makes your building stand out. Pictured here in this brochure are examples of concepts, where Trespa panels are used to create extra skins and sunblinds that envelope buildings to change and enhance their overall appearance.

These concepts are part of Trespa Perspectives, the inspirational source of new ideas for architects, designers and specifiers, comprising different architectural elements based on the themes of Rhythm, Depth and Character.



Arch. Monijg, The Netherlands



Arch. Coline Rochebeau & Sgard, France



Inspiration comes to life
With a broad range of colours, finishes and tactile effects, Trespa Meteor brings compelling aesthetic and nearly limitless design possibilities to next-generation architectural claddings. Depending on the architectural concept, Trespa Meteor can contribute effectively to energy efficient, healthy building designs with a positive impact on long-term performance and value. Come and be inspired: <http://perspectives.trespa.com>

The designs shown in this brochure are for inspiration only and have not been submitted to specific tests. Actual designs may vary, depending on specific location, regulations and circumstances. Design and fixing systems may influence possible end results. Trespa Meteor is CE marked and fully complies with the EU standard. Always check if the desired design is in accordance with any national and/or local building regulations and specifications.

Arch. Michele Sfrigolo, Italy

Arch. Peck, Lesko & Partner, Germany

Arch. Architects, France

DECORATIVE SKINS

The designs shown in the Perspectives brochure are for inspiration only. They have not been tested. Although it is possible to create similar effects, the actual designs that can be realized depend on the location of your building and circumstances. Design and required fixing systems can also influence the possible end result. Trespa Meteon is CE marked and fully complies with the EU standard. Always check if the desired design is in accordance with any national and/or local building regulations and specifications.

Ensure that you use panels with a thickness of at least 8 mm. Formed panels are 10 mm thick.

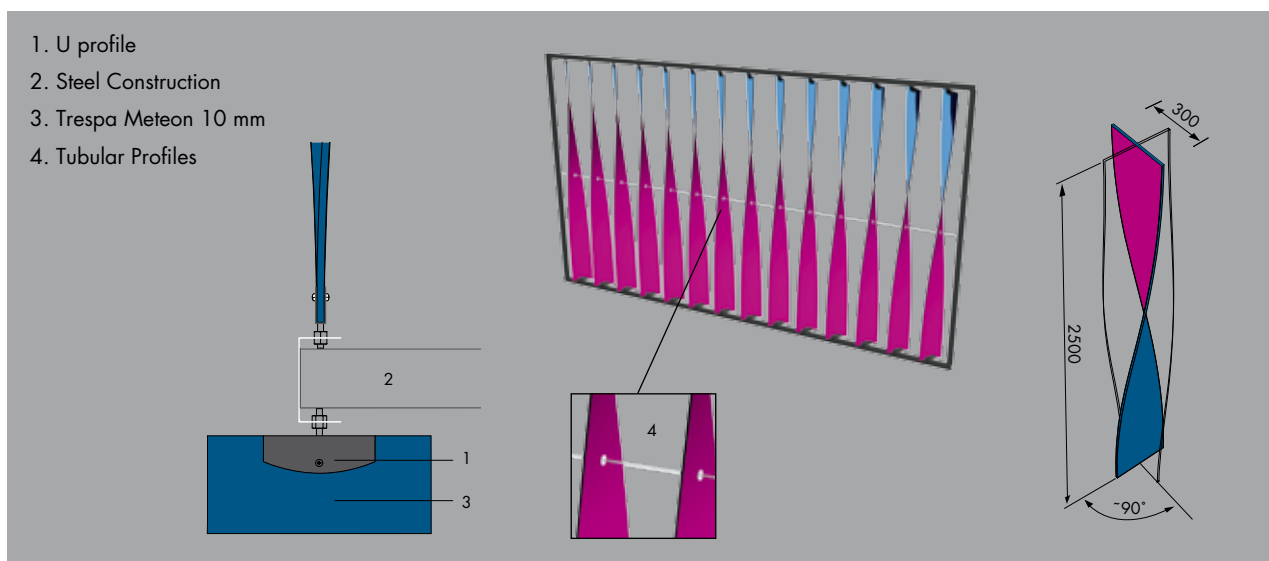
Creating the decorative skins

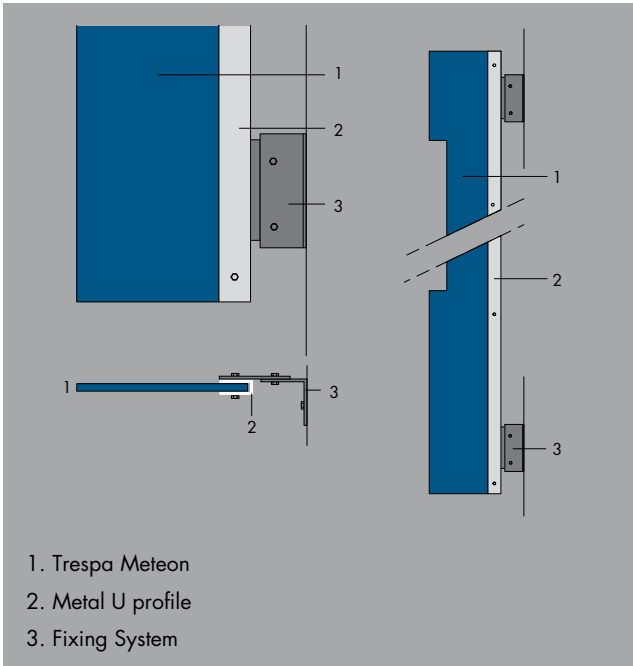
As with all our concepts, many variations and solutions are possible to create the desired effect.



Helix

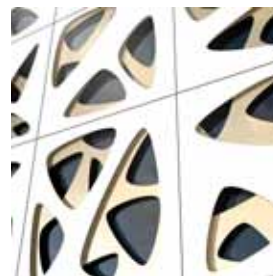
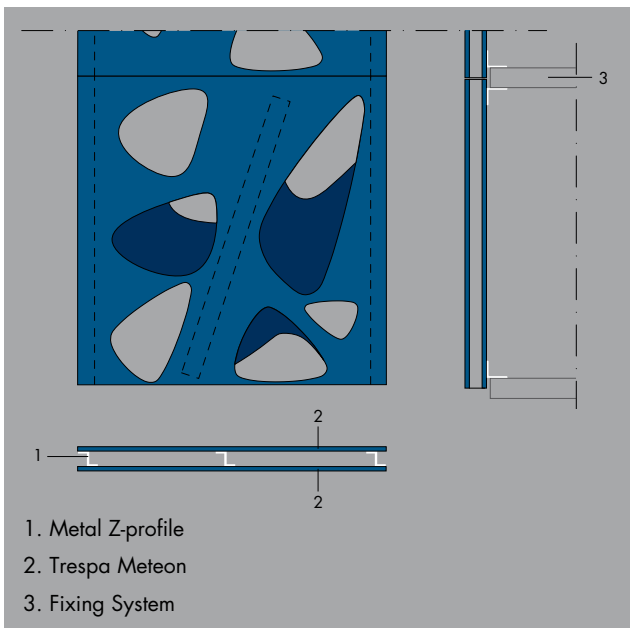
Helix is a design based on the technical opportunity to curve Trespa panels. In this design, Helix shaped panels are fixed in a rectangular frame. The strips can be attached at the top and bottom, using a U-shaped profile and rivets or screws. By placing a horizontal tube through the centre of the strips, they can be positioned by means of a short tubular profile. Individual strips are 300 mm wide and have a maximum length of 3000 mm.





Wave

This design uses a U-profile. The possible length and width of the panel is determined by the choice of fixing system and panel thickness. For this design we used a 13 mm panel. This allowed us to meet the windload requirements and allowed us to have a fixing system for only one side of the panel.

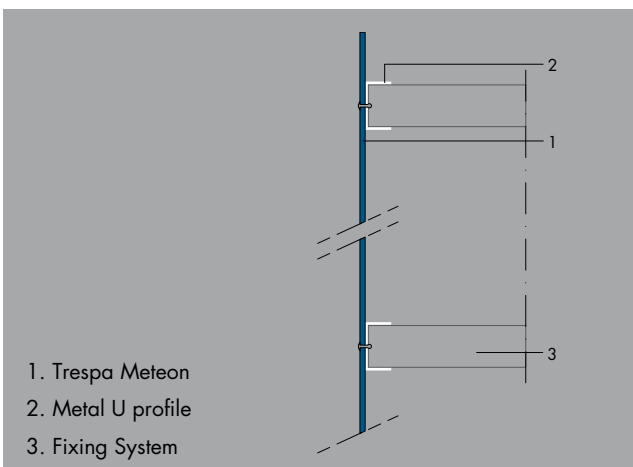


Skin

A double layer may be realized by using sandwich panels: a stable package of two panels with a profile in between.

The possibilities depend on a number of variables:

- back construction and fixing system
- sizes of the holes
- The amount of Trespa material left between the cut outs
- panel thickness



Domino

In this concept we simply used rivets to fix the planks to aluminium horizontal beams.