

Office building Inpek Srl
Italy



Strong National Museum of Play
USA



Kanzlei Gerber
Austria



Woongsang
Korea



Ecole de musique
France



School Oudkarspel
The Netherlands



Great Lakes Aquatorium	Location : Milwaukee, WI, USA	Colour : A 05.0.0 Pure White
	Function : Public building	Structure : Satin
	Architect : HGA Architects	Fixing System : TS110 Screwfix on a aluminium subframe
Erich Kästner Schule	Location : Reutlingen, Germany	Colour : Naturals NA10 Titanic
	Function : School	Structure : Satin
	Architect : Eberhard Wurst	Fixing System : TS700 Rivetfix on metal frame
Office building Inpek Srl	Location : Prati/Vipiteno (BZ), Italy	Colour : Metallics M.51.0.1 Aluminium Grey, Metallics M.21.8.1 Graphite Grey, A.04.1.7 Gold Yellow
	Function : Office building	Structure : Rock and Satin
	Architect : Enrico Massagranda	Fixing System : Special fixing system
Strong National Museum of Play	Location : Rochester, NY, USA	Colour : A.04.1.7 Gold Yellow, A.12.3.7 Carmine Red, A.33.3.6 Brilliant Green, A.21.5.4 Cobalt Blue and project colours
	Function : Museum	Structure : Satin
	Architect : CJ&S Architects	Fixing System : TS100 Screwfix on metal subframe
Kanzlei Gerber	Location : Reutte, Austria	Colour : A.12.6.3 Wine Red
	Function : Individual housing	Structure : Satin
	Architect : Matrix Architekten, Bregenz	Fixing System : Special fixing system
Woongsang	Location : Kyungsangnamdo, Korea	Colour : Wood Decors NW 08 Italian Walnut
	Function : Culture & Welfare center	Structure : Satin
	Architect : Buam Architects	Fixing System : TS200 Invisible fixing with brackets on rails
Ecole de musique	Location : Tassin La Demi Lune, France	Colour : A.90.0.0 Black
	Function : School	Structure : Gloss
	Architect : SIZ-IX Architectes	Fixing System : TS.200 for the facade and a special fixing system for sun blinds
School Oudkarspel	Location : Oudkarspel, The Netherlands	Colour : Various colours
	Function : School	Structure : Satin
	Architect : Burger Grunstra architecten adviseurs	Fixing System : TS450 Invisible fixing with adhesive

2006
**EXTERIOR
PROJECTS**

Trespa International B.V.
Trespa International B.V. specialises in high quality panel material for façade cladding and interior use. Trespa has both the expertise and the means to develop products for specific segments of the market. Trespa is continually looking for ways to protect the environment even more effectively.

Trespa guarantees quality of both products and services. We offer our customers optimal technical support as well as straightforward documentation. Proof of this approach is the award of the ISO 9001 and ISO 14001 certificates.



Whatever your requirements, Trespa offers a full support service. Please contact us for further information.

Conditions of Sale

To all our offers, quotations, sales, deliveries and supplies and/or agreements, and to all related services and activities the

Trespa UK Ltd

Grosvenor House
Hollinswood Road
Central Park, Telford
Shropshire, TF2 9TW
Tel.: 44 (0) 1952 290707
Fax: 44 (0) 1952 290101
info@trespa.co.uk

Trespa International B.V.

P.O. Box 110, 6000 AC Weert
Wetering 20, 6002 SM Weert
The Netherlands
www.trespa.com

EMEA Export

Tel.: 31 (0) 495 458 359 / 285
Fax: 31 (0) 495 458 383
infoexport@trespa.com

Trespa International B.V. General Conditions of Sale apply, filed at the Venlo Chamber of Commerce on 11 April 2007, registered under number 24270677, and appearing on the website at www.trespa.com. The text of these General Terms and Conditions will be sent to you upon request.

Responsibility

We believe all information in this publication to be correct at the time of printing. It is intended as information concerning our products and their application possibilities and is therefore, not intended as any form of guarantee with regard to any specific product characteristic.

Colours

The colours in this document are printed, and therefore, may vary slightly from the original Trespa panel colours with respect to gloss, colour shades and surface texture. Original samples are available on request.

Registered trademarks

® Trespa, Meteon, Athlon, TopLab, TopLab™, Virtuon, Volkern, Ioniq

Trespa North America Ltd.

12267 Crosthwaite Circle
Poway, CA 92064
Tel.: 1-800-4-TRESPA
Fax: 1-858-679-9568
info@trespanorthamerica.com

**Trespa New York
Design Centre**

62 Greene Street (Ground Floor)
New York, NY 10012
Tel.: 1-212-334-6888
Fax: 1-866-298-3499
info.ny@trespa.com

Asia/Pacific Sales Support

Tel.: 86 (0) 21 6288 1299
Fax: 86 (0) 21 6288 1296
infoapac@trespa.com

and Inspirations are registered trademarks of Trespa International B.V.

Copyrights

© All rights reserved. No part of this publication may be reproduced, stored in a retrieval system, or made public, in any form or by any means, either graphic, electronic or mechanical, including photocopying, recording or otherwise, without the prior written permission of Trespa International B.V.

www.trespa.com

Trespa China Co. Ltd.

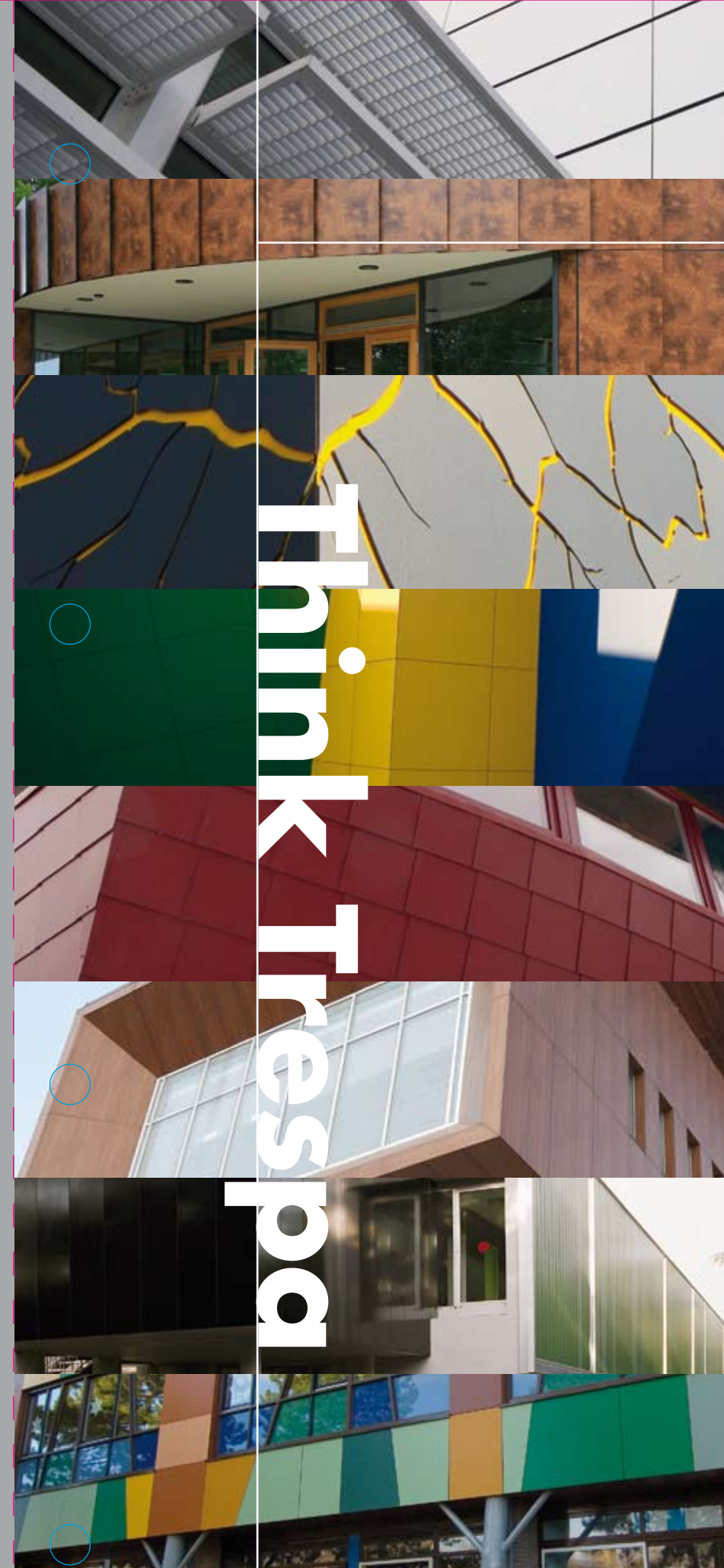
Room 2604-05, HuaiHai Plaza
No. 1045 HuaiHai Road (central)
ShangHai 200031, P.R. China
Tel.: 86 (0) 21 6288 1299
Fax: 86 (0) 21 6288 1296
infochina@trespa.com

CSD Asia/Pacific

Tel.: 86 (0) 21 5465 8388
Fax: 86 (0) 21 5465 6989

Trespa Singapore Pte Ltd.

UOB Plaza 1
80 Raffles Place
Level 35 Room 8
Singapore 048624
Tel.: 65 6248 4613
Fax: 65 6248 4501
infoapac@trespa.com



TURN IDEAS INTO REALITY

Trespa panels are used to create new and exciting façades all around the world. As a unique material, they provide architects and designers with the inspiration to create outstanding and innovative buildings.

In this folder, we highlight a small number of projects. Although few in number, they give an idea of the many possibilities. For a broader, more up-to-date overview please visit www.trespa.com, where you will also find the latest information on all of our products and services.

Talk to Trespa

If we have inspired you to think Trespa and you would like to obtain some personal advice or more detailed information, please contact your nearest Trespa office.

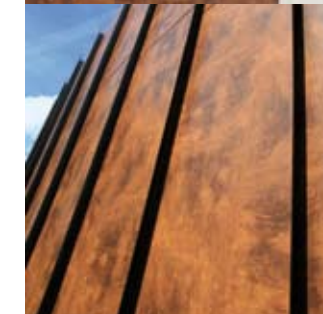


Great Lakes Aquatarium
USA



Erich Kästner Schule

Germany



Your Trespa distributor:

TRES|SPA®



code U2640
version 01-2009 copies 2,000

Please visit www.trespa.com
for the most up to date version
of this brochure